

EASYFLEX

EASYFLEX



QuickFLARE™
vectorFLEX®
EASYFLEX

EASYFLEX
vectorFLEX® QuickFLARE™
vectorFLEX® QuickFLARE™
EASYFLEX vectorFLEX®
vectorFLEX® QuickFLARE™
EASYFLEX

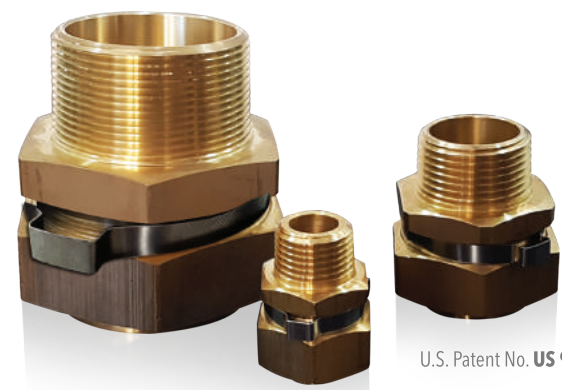
CUT • PUSH • TIGHTEN

WITH QUICKFLARE™



FLEX YOUR PIPES

WITH VECTORFLEX™



U.S. Patent No. US 9,127,790 B2

QuickFLARE™

888.577.8999 vectorflex.com

vectorFLEX™
CSST GAS LINE BY EASYFLEX

888.577.8999 vectorflex.com

ABOUT VECTORFLEX™

The Easyflex® VectorFlex™ and VectorFlex-Z™ CSST Gas Line Systems are engineered and manufactured to address the problems associated with rigid gas pipe applications. Because these gas line systems are flexible CSST, they can be used in locations where traditional rigid pipes can not. Within the confines of a gas pipe system, VectorFlex™ and VectorFlex-Z™ have the ability to bend around obstacles without the use of joints or elbows. This benefit drastically lowers labor time and costs while also reducing the possibilities of leaks caused from using too many fittings. Although both CSST gas line systems have a flame-retardant polyethylene coating that classifies them as ASTM E84 compliant, the VectorFlex-Z™ system has an additional feature—a protective shield that dissipates the electricity generated from lightning strikes.



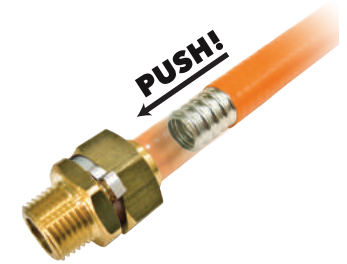
	vectorFLEX	vectorFLEX-Z
304 flexible stainless steel	✓	✓
Annealed for flexibility and purity	✓	✓
Flame-retardant protective coating	✓	✓
Works with QuickFlare™ fittings	✓	✓
Lightweight and easy to transport	✓	✓
Conductive jacket protects from lightning	✗	✓
No additional bonding required	✗	✓

TECHNICAL DATA

Tubing Material	Stainless Steel 304 (ASTM A240)						
Coating	Polyethylene			Conductive Jacket			
Protective Coating Color	VectorFlex™ - Yellow / VectorFlex-Z™ - Black						
Available Sizes	3/8"	1/2"	3/4"	1"	1-1/4"	1-1/2"	2"
EHD	13	18	23	31	37	47	62
Available Lengths (Rolls)	50 ft / 100 ft / 250 ft						
Operating Pressure	25 psig						
Min. Bend Radius (Recommended)	2"			4"			
Minimum Tightening Torque	110	130	160	190	210	230	260

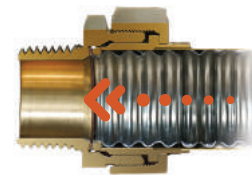
ABOUT QUICKFLARE™

QuickFlare™ fittings are specifically designed to fit and connect the VectorFlex™ and VectorFlex-Z™ CSST flexible gas line systems. All QuickFlare™ fittings are made of brass and come pre-calibrated, ready to use from the factory. These self-flaring fittings do not require any special tools or equipment and installation is worry-free with our patented, 3-step process - **CUT•PUSH•TIGHTEN**.



QuickFLARE™

1000°F **No Leakage**



U.S. Patent No. **US 9,127,790 B2**

Features and Benefits:

- 3 simple steps for easy installation
- Self-flaring, no special tools required
- Resistance to scaling & corrosion for longevity
- Wide variety for all types of applications

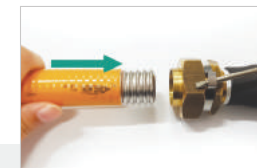
EASY 3-STEP INSTALLATION

01 CUT



Cut the tube where the fitting will be connected.

02 PUSH



Push the tube into the fitting.

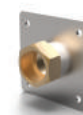
03 TIGHTEN



Tighten the fitting with a wrench.

ACCESSORIES

Easyflex carries a full line of accessories for the VectorFlex™ CSST Gas Line System. This includes flanges, manifolds, and an extended list of stub outs and striker plates. Tools, such as tube cutters, a jacket stripper, and a plastic pipe cutter are also available.



Flange



Manifold



Stub Out



Striker Plate



Bonding Clamp